



Shelby county, TN icjis
June 3rd, 2014



Ed Raper, PMP
iCJIS Project Director
Shelby County TN Government

Laurence Ross
Manager, Business Development
Software AG

Shelby county icjis

June 3rd, 2014



The Integrated Criminal Justice Information System project is the replacement of legacy criminal justice systems with COTS solutions and the development of a web portal to share and integrate criminal justice data county wide.



iCJIS – Integrated Criminal justice system

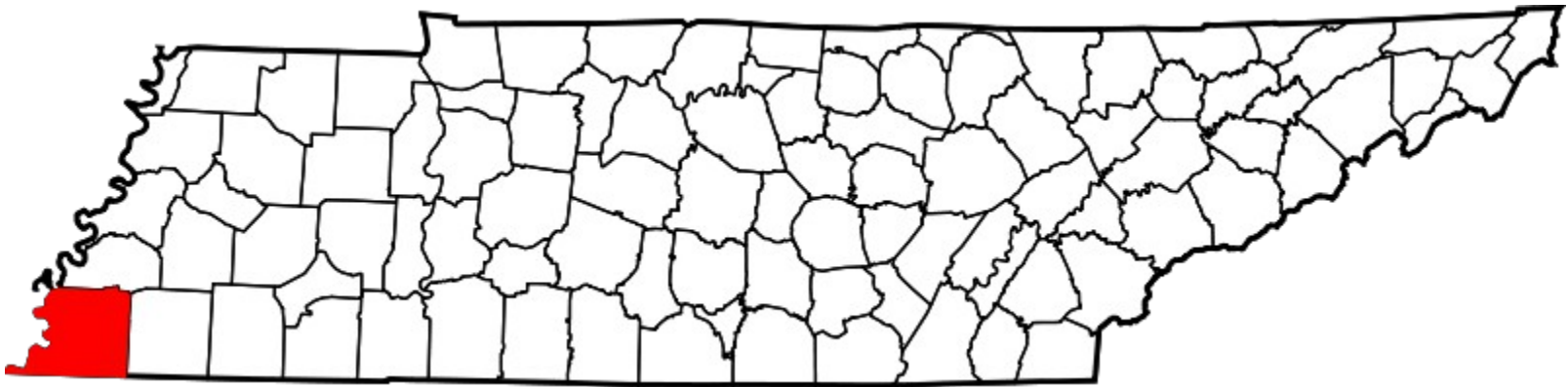
- Replace 17 year old Criminal Court System (JSS) and include case management for PreTrial Services.
- Replace 17 year old Jail Management System at the Jail and the Inmate Management System at the Correction Center with a single Offender Management System.
- Implement a case management system for Public Defender.
- Find Commercial of the Shelf Products for all these solutions.
- Integrate these system through Service Oriented Architecture (SOA) using an Enterprise Service Bus (ESB).

Launch an Info Hub Public Portal.



Shelby county TN

- Memphis is the county seat
- Population just under a million
- Largest County in TN
- 7 Municipalities





Shelby county Criminal justice landscape

- General Sessions, Criminal Division
 - ❖ 9 Divisions
 - ❖ 250,000 filings a year
 - ❖ Specialty courts: Drug, Veteran's, Domestic Violence, Environmental
 - ❖ 4 municipalities have general sessions jurisdiction
- Criminal Court
 - ❖ TN State Court
 - ❖ 10 Divisions

28,000 filings





Shelby county Criminal justice landscape

- **PreTrial Services**

- ❖ PreTrial and post Sentence (Probation) supervision

- ❖ Jail Release, Court Operations, Day Reporting Center, Intensive Supervision, Mental Health, Probation, Treatment Program and Community Services

- **Public Defender**

- ❖ 34,000 cases a year

- ❖ 88 attorneys

- ❖ Represent clients in General Session & Criminal Court, plus city courts of Millington, Bartlett, Germantown and Collierville

- Represent juveniles at Juvenile Court



JustCity
justice for a new generation



Shelby county Criminal justice landscape

- Jail
 - ❖ Sheriff's Office
 - ❖ Pretrial only
 - ❖ 2 Facilities
 - 201 Poplar – Downtown High-rise
 - Jail East – Females and j
 - ❖ 2400 ADP

- Correction Center

- Mayor's Office
- Sentenced only
- ❖ 85% State Inmates
- ❖ 2350 ADP



iCJIS PROJECT

Year 1:



2010

Jan Feb March April May June July Aug Sep Oct Nov Dec

CJCC
IT Steering
Committee

NCSC and IJIS Independent Assessments

Committee Formed

Sheriff Luttrell forms the IT Steering Committee from the Shelby County Criminal Justice Coordinating Council. Bill Powell appointed chairman.

iCJIS PROJECT

Year 1: 2010



The National Center for State Courts (NCSC) and IJIS Institute produce independent reports with similar findings

- The Court System (JSS) is dated, difficult to maintain and does not meet user needs.
- PreTrial Services is using 6 Access databases that could be replaced by a Court Case Management System (CCMS).
- The Jail Management System (JMS) is old and does not meet operational or management needs.
- The Inmate Management System is aging, could better meet needs, and does not efficiently share data with JMS.
- The Public Defender has no CMS – could operate more efficiently and support the overall justice system better.

Automated communication between county agencies and between county, state, and federal agencies is required and needs to increase significantly.

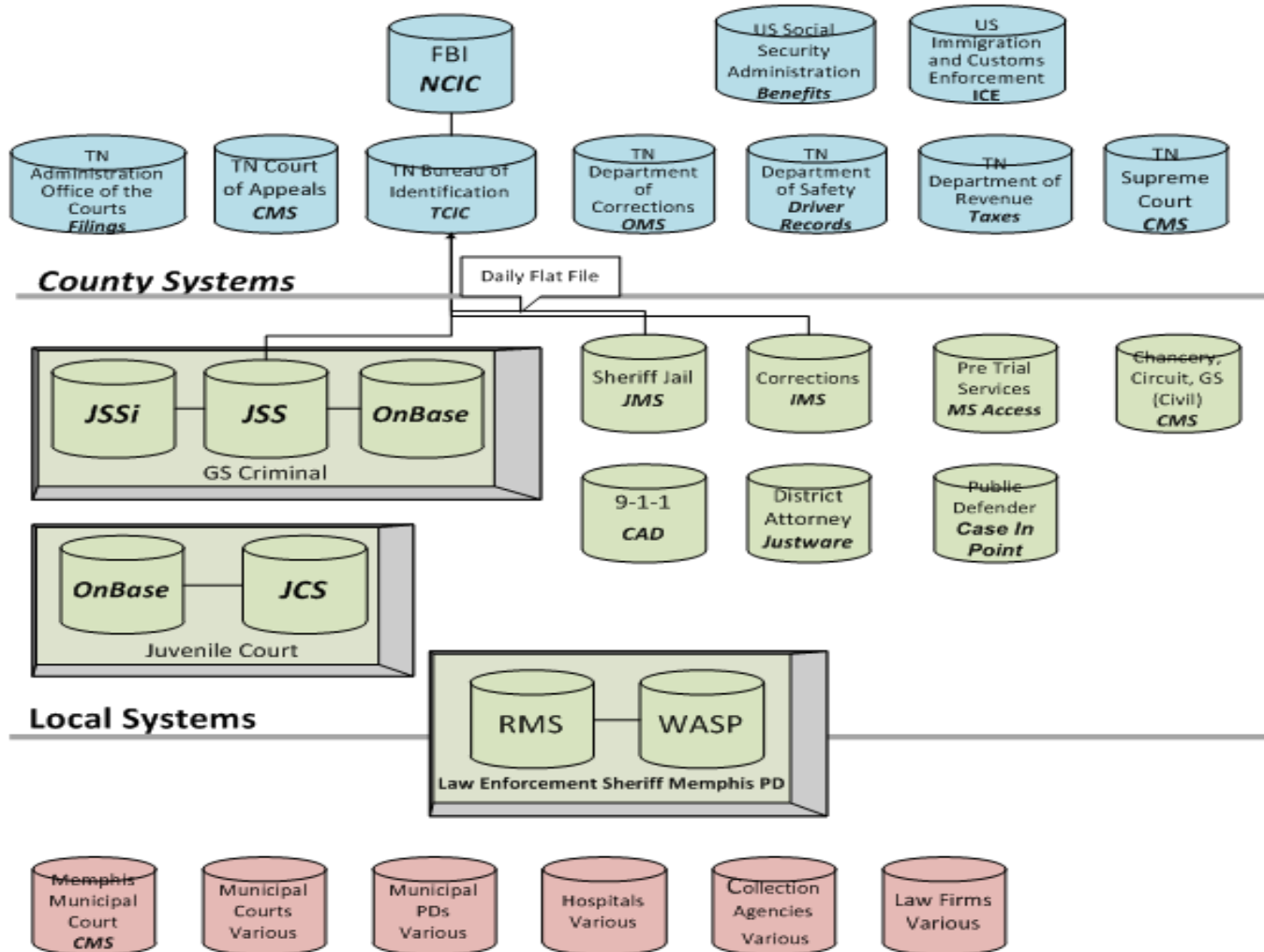
To be effective, the system requires the following: required for point-to-point interfaces



Shelby County Criminal Justice Interfaces Today

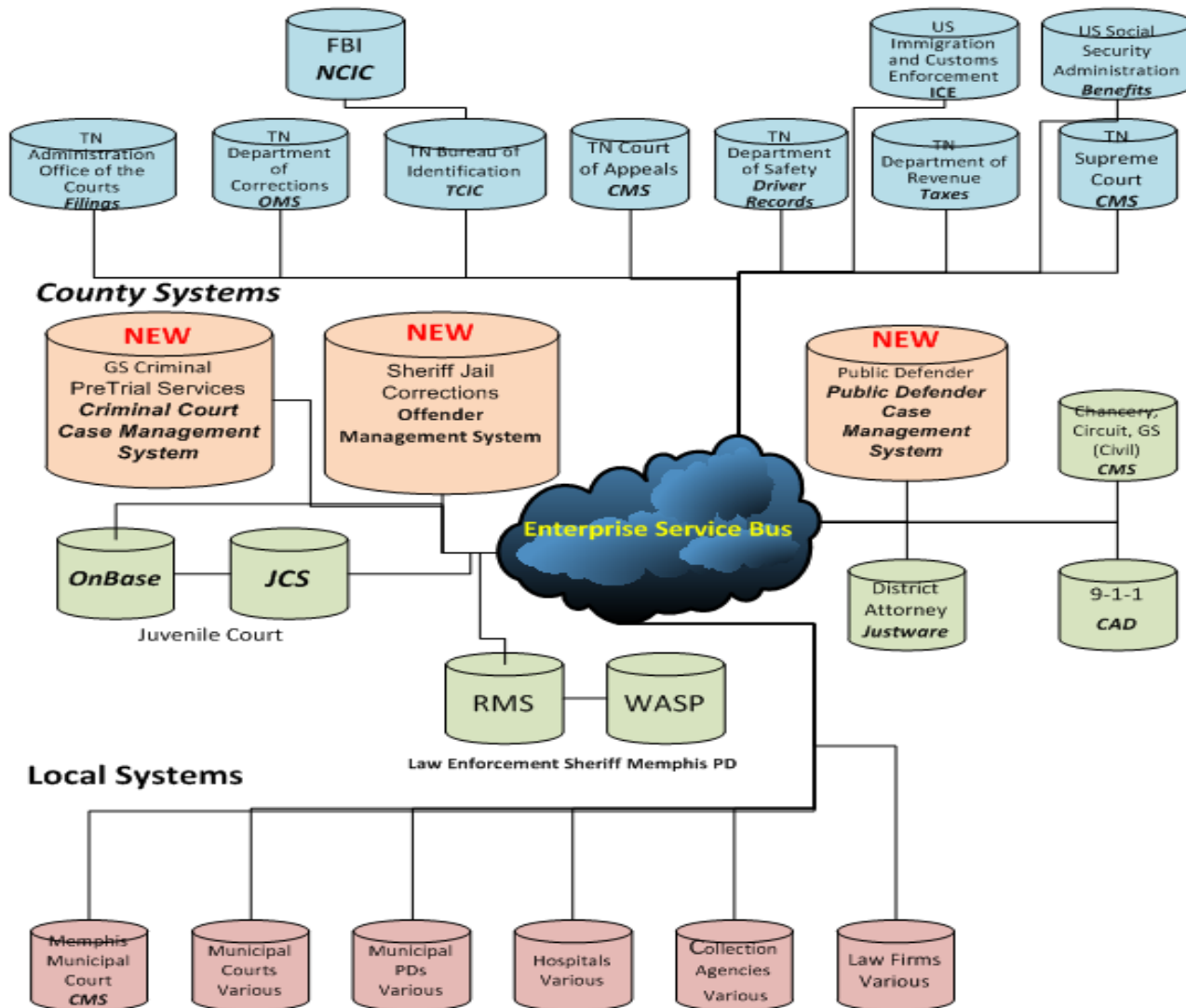


State and Federal Systems





Shelby County's Future iCJIS Environment



iCJIS PROJECT PLANNING

Year 2:



2011

Jan Feb March April May June July Aug Sep Oct Nov Dec

NCSC and IJIS independent Assessments

Select Project
Manager

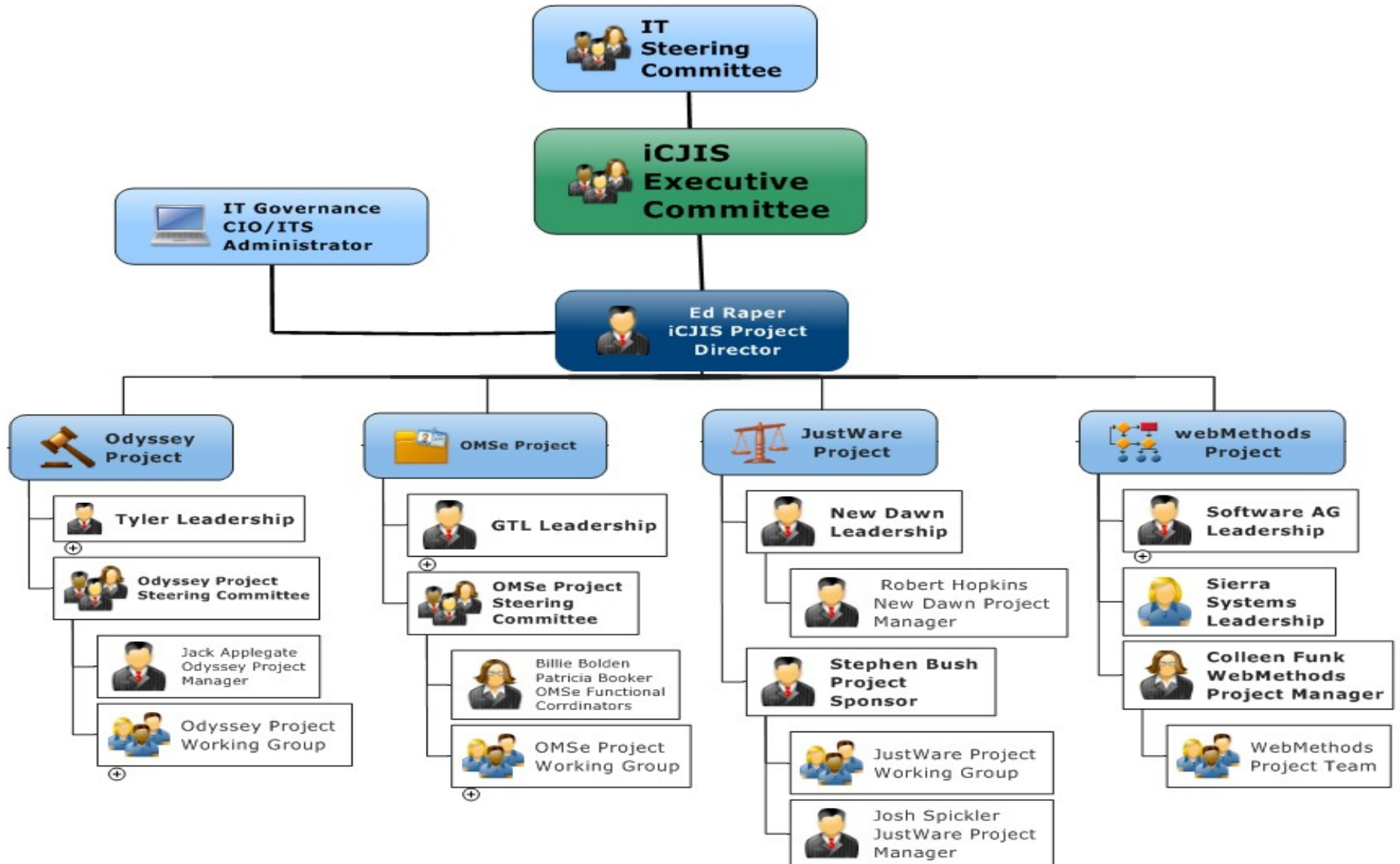
PM RFP –
Development and Publish

PM RFP – Select

Project Manager Selected and Consultant Selection Process Begins: \$8 million in CIP funds are allocated in FY2012 budget. IT Steering Committee determined iCJIS to be the highest priority project and rated the project first in proper planning and defined need.

iCJIS PROJECT iCJIS Governance and Project Management

Year 2: 2011





iCJIS Governance and Project Management

iCJIS Executive Committee

Executive Sponsors

Chris Craft, Criminal Court Judge

Chuck Fox, IT Steering Committee
Chair

Kevin Key, Criminal Court Clerk

Mark H. Luttrell, Mayor

Bill Oldham, Sheriff

Curtis Person, Juvenile Court
Judge

Ed Stanton, General Sessions
Court Clerk

Joy Touliatos, Juvenile Court Clerk

Amy Weirich, District Attorney
General

Stakeholder Agencies

Correction Center

Criminal Court

Criminal Court Clerk

District Attorney

General Sessions Court

General Sessions Court Clerk

Information Technology Services

Juvenile Court

Memphis Bar Association

PreTrial Services

Public Defender

Sheriff's Office

iCJIS PROJECT PLANNING

Year 3:



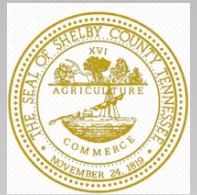
2012



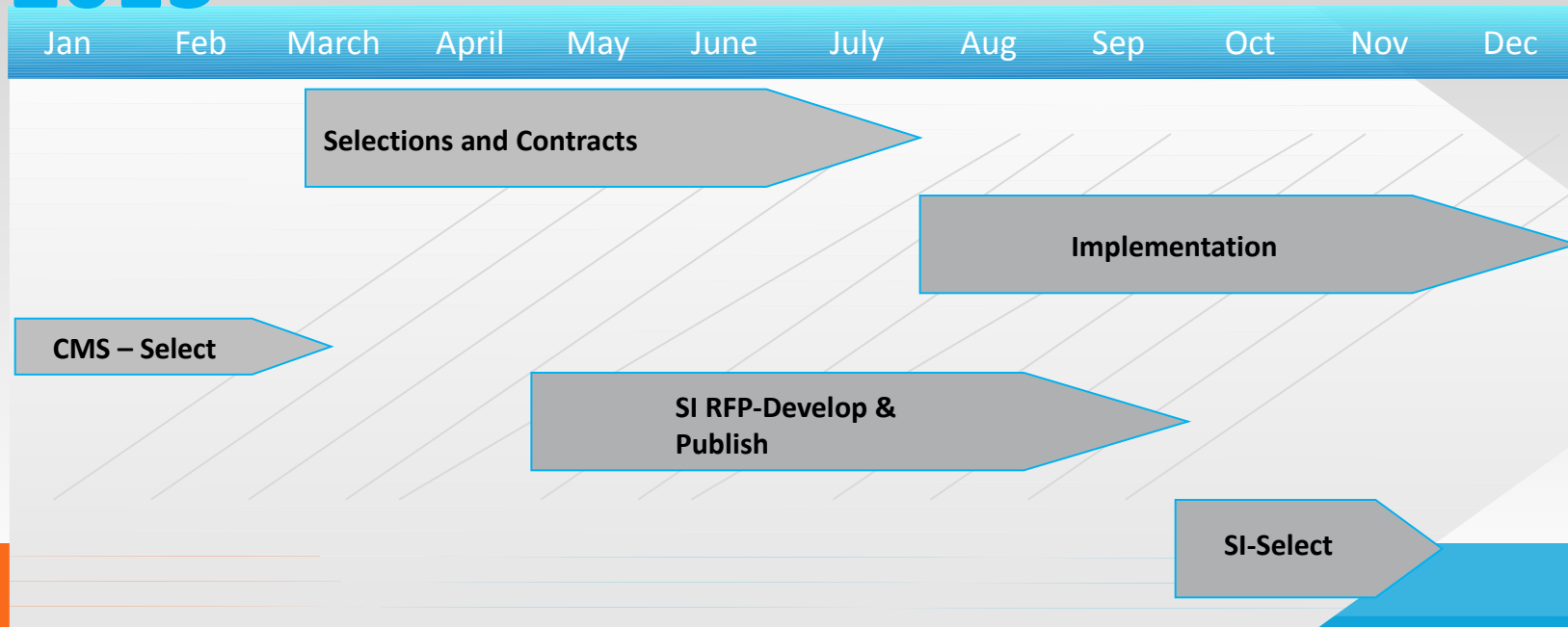
Business Process Reviews Conducted and RFPs Published
Requirements gathered for all systems. RFPs published and evaluated.

iCJIS PROJECT PLANNING

Year 4:



2013



Solutions Selected and Implementation Begins
County Commission approves contracts with selected vendors and implementation gets started.



Objectives

Strategic

- Reduce cost of criminal justice services
- Increase law enforcement and correctional officer safety
- Reduce cost of crime
- Enhance the safety, security, and quality of life in Shelby County
- Protect the privacy and confidentiality of information

Promote common, standards-based information sharing

Invest in a long-term solution that is flexible and expandable



Objectives

Tactical

- Increase the accuracy, timeliness, completeness & availability of information
- Improve the effectiveness of justice programs
- Improve the efficiency of justice operations
- Increase offender accountability



Deliver a complete view of justice system information



Needs

Strategic

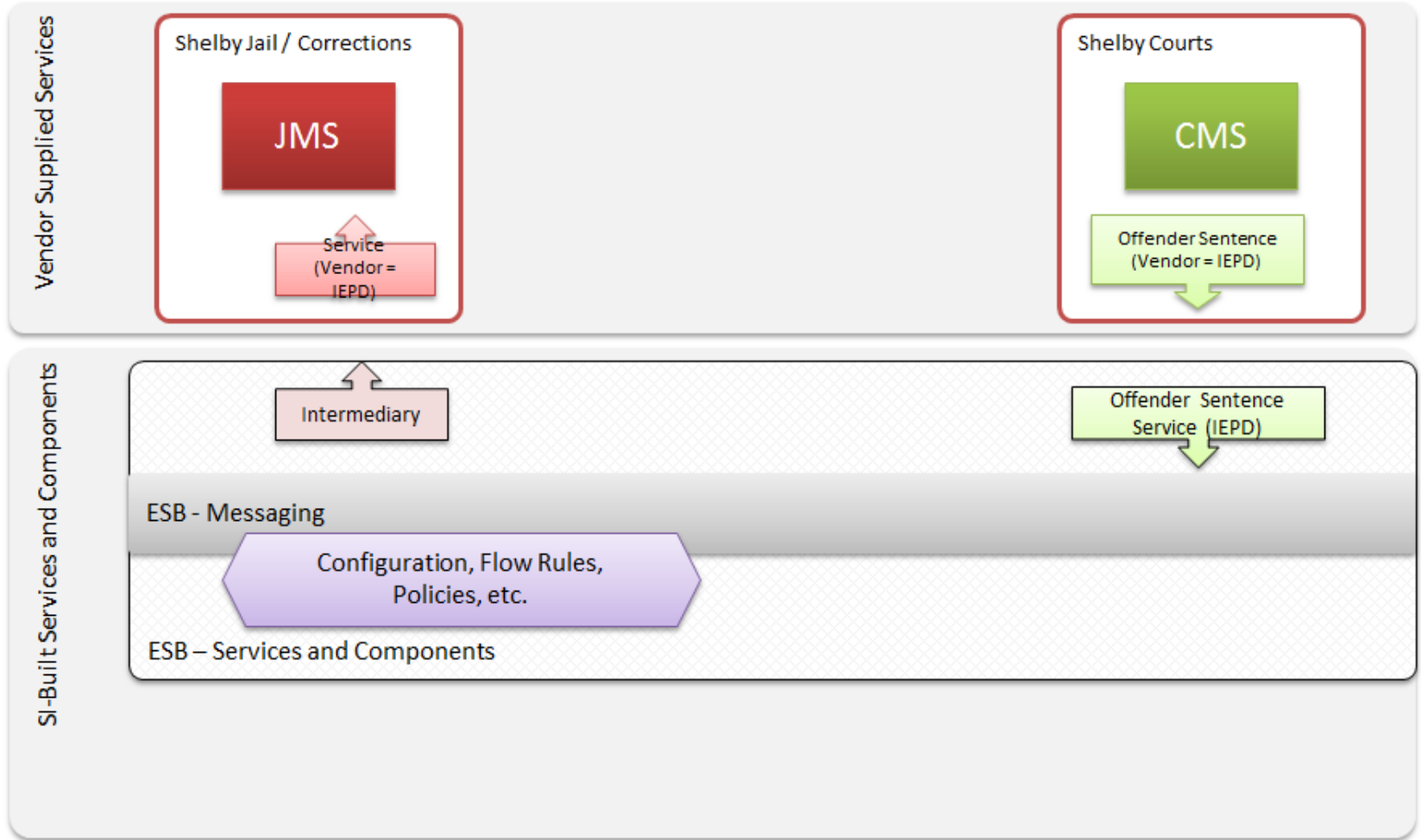
- Provide organizational capacity and agility
- Federal standards for data exchanges
- NIEM (National Information Exchange Model)
- JIEM (Justice Information Exchange Model)
- GFIPM (Global Federal Information Processing Model)
- “Paper on Demand”



Shelby County's Future iCJIS Environment



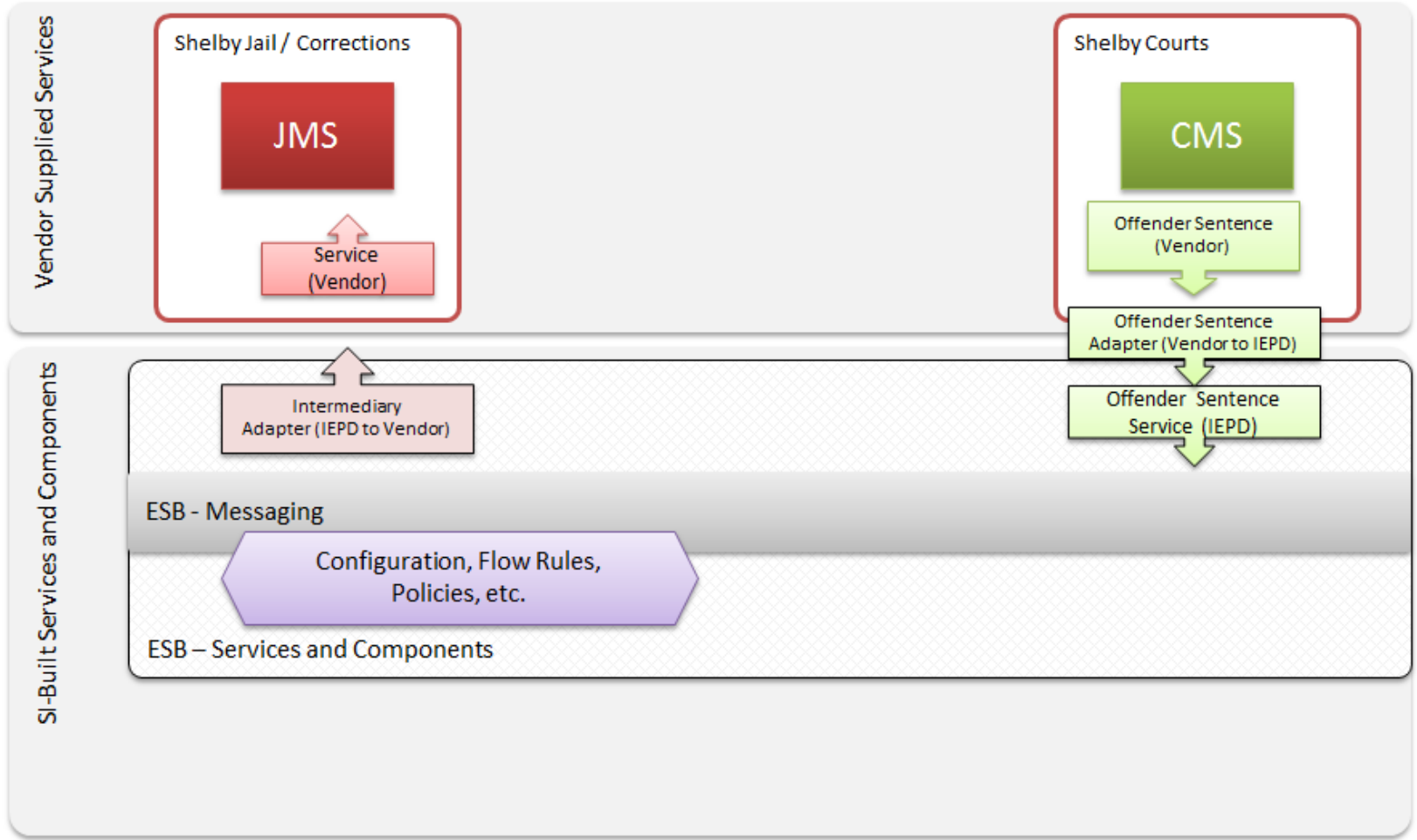
Idealized Information Exchange



Shelby County's Future iCJIS Environment



Likely Information Exchange





Needs

Reduce!!

- justice process delays
- time spent collecting/sending info
- physical mail sent
- “quadruplicate” data entry
- physical file storage
- lag between when one business process stops and another begins across partner agencies



time to disposition

iCJIS PROJECT

Year 4: 2013



Strategic Plan Alignment

- Reduce the cost of criminal justice services
- Increase law enforcement and correctional officer safety
- Reduce the cost of crime
- Enhance the safety, security, and quality of life in Shelby County
- Protect the privacy and confidentiality of information
- Promote common, standards-based information sharing

Invest in a long-term solution that is flexible and expandable

iCJIS PROJECT

Year 4: 2013



Benefits Beyond the Scope of this Project

- Acts as a criminal justice communication information hub for the region
- Connect internal systems such as financial systems to infrastructure management systems
- Provides citizens with direct access to real-time, easy to use government services, allowing them to circumvent red tape, cumbersome paperwork, and long lines
- Reduces silos of information
- Guarantees message delivery, even when systems/networks go offline
- Health Service
 - Connect to hospitals, clinics, State and Federal Systems

Single source of accurate information

Real time data produces actionable business intelligence

Better collaboration on land and planning use matters among agencies including the Office of Sustainability

iCJIS PROJECT PLANNING

Years 5&6:



2014-2015

Jan Feb Mar Apr May Jun Jul Aug Sep Oct Nov Dec Jan Feb Mar Apr May Jun

Implementation– Data conversion, customization, training, data exchange development

SI-Select

PD Go Live

OMS & Court
Go Live

Info Portal
Go Live

Implementation and Go Live
Includes any customization, testing, training and go live. A hybrid phased/Big Bang Go Live is planned.

iCJIS PROJECT Cost Benefit



Break Even Point in 2020

Benefits and policy decisions made possible by iCJIS can save county \$3.5 million annually.

Challenges



- Constant reminder to business groups on “Why COTS”
- Business Process Change
- ITS resources
- Retirements

Questions?

Shelby County icJIS

